

**NADI/JET**



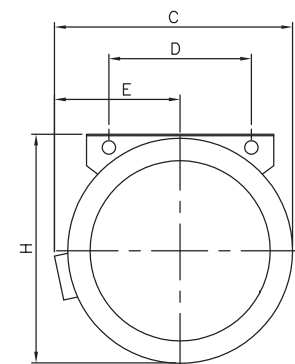
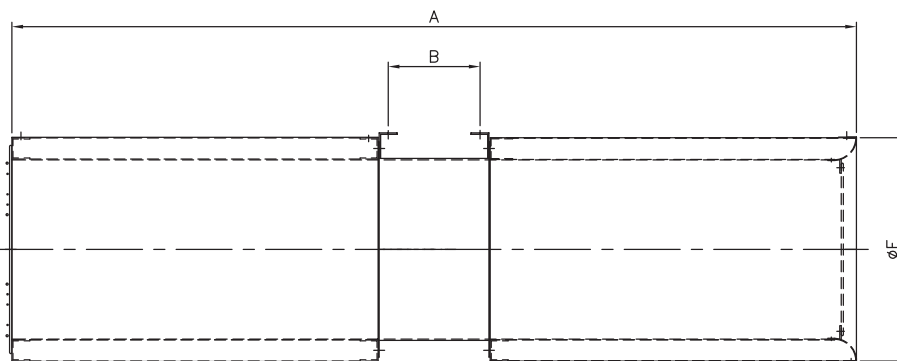
**JET FAN VENTILATION SYSTEM  
FOR CAR PARKS**

- Regular use at ambient temperature
- Smoke extraction in case of fire F300 (300 °C/120 min.) available on request
- Impeller specially designed for low noise
- Fan dynamically balanced for low vibration
- Motor IP55, Insulation class H (smoke extract) Motors IP55, insulation class F (Normal condition), according to EN 60034-5/IEC 85
- 50/60 Hz Range available



\* Reversible available on request

JET FAN					NJF FAN DIMENSION DATA			
Model No		NJF 315	NJF 355	NJF 400	SIZE	315	355	400
Voltage/Frequency	V / 50 Hz	415	415	415	H	430	470	510
Phase	~	3	3	3	A	1545	1705	1885
Speed	rpm	2840/1380	2840/1380	2840/1380	B	205	205	205
Rated power	kW	0.76/0.18	1.5/0.4	1.6/0.5	C	448	486	531
Rated current	A	1.84/0.66	3.44/0.83	3.1/1.09	D	290	350	350
Thrust	N	21/5	36/8	54/13	E	240	258	280
Air volume	m3/h	4350/2150	6375/3175	8650/4300	F Ø	415	455	500
Weight	kg	55	68	75				
Sound Level	dBA	64/47	67/51	66/49				



The Company reserves the right to make changes of technical data without prior notice.



**NADI Airtechnics Pvt. Ltd.**

**Registered Office**

Door No. 57-58, Ground Floor, Thattankulam Road, Madhavaram, Chennai - 600 060, India.  
Ph : +91-44-2553 2212 / 2213 / 2419 | Fax : +91-44-2553 2415

**Factory**

Unit V, Survey No. 9/11, 9/12, 114/1A GNT Road, Azhinjivakkam, Jeganadhapuram I Revenue Village  
Ponneri Taluk, Thiruvallur District - 600 067, Tamil Nadu. Ph : + 91-44-2798 4796 / 97 / 98 / 99

Email: info@nadiindia.com | Web: www.nadiindia.com