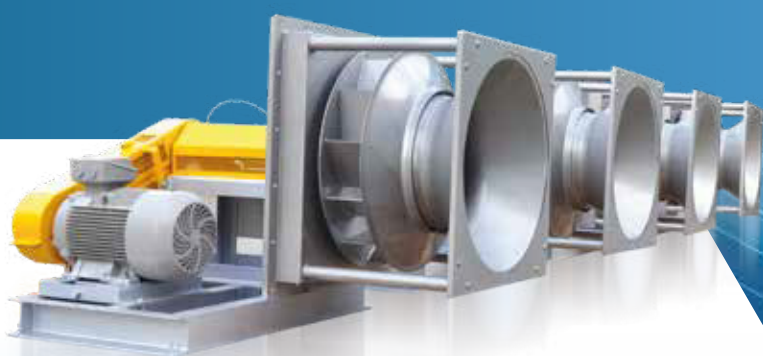


FANS FOR STEEL PLANTS



TECHNICAL SPECIFICATION OF CENTRIFUGAL FAN:

- Air flow - Upto 5,00,000 cmh
- Pressure - Upto 1800 mmwc
- Motor power - upto 600 kW

KILN SHELL COOLING FANS

**Axial fans Size: 315 mm to
2000 mm**

- Air Flow: upto 3,25,000 cmh
- Adjustable angle type blades
- High efficiency Aluminium Aerofoil impeller
- Static Pressure: upto 70 mm WGP
- Temp up to 80 deg. C

SALIENT FEATURES

- Backward Inclined/Backward Curved, Non Overloading
- Low noise design
- Fan Efficiency up to 85%
- Self cleaning Blade design, Suitable for handling dust
- Hard faced liners on blade for Superior resistance to abrasion and wear *(Available on request)*
- Suitable for High Temperature application
- Belt/Couple Driven fan configuration available
- Rotor Balancing grade G2.5 or 6.3 as per ISO 21940
- High strength carbon steel

APPLICATIONS:

ID

- ID fans
- Combustion air fans
- Sealing Air fans
- Klin shell cooling fans
- ABC fan
- Dedusting fans

OTHER PROCESS FANS

- Sinter cooler fans
- Pellet cooler fans
- Pellet induration fans
- Pellet drying & preheating fans
- Dust emission control fans



NADI ADVANTAGE ON-THE-GO!

Buying a NADI product is just a click away.
New Fan Requirement | Retrofit | Spares | After Sales & Service



Scan To Download
From App Store



Scan To Download
From Play Store

Website : www.nadiairtechnics.com

NADI Airtechnics Pvt. Ltd.

Survey Nos. 9/11, 9/12, 114/1A GNT Road Azhinjivakkam, Jegannadhapuram Revenue Village, Ponneri Taluk, Thiruvallur District - 600 067, Tamil Nadu, India. Ph: +91 44 27984797 / 98 / 99 | Email: info@nadiairtechnics.com

NADI Airtechnics U.S. LLC.

180 KEHOE BLVD, CAROL STREAM, IL 60188, USA | Ph: +1 (908) 656-3358
Email: nadius@nadiairtechnics.com